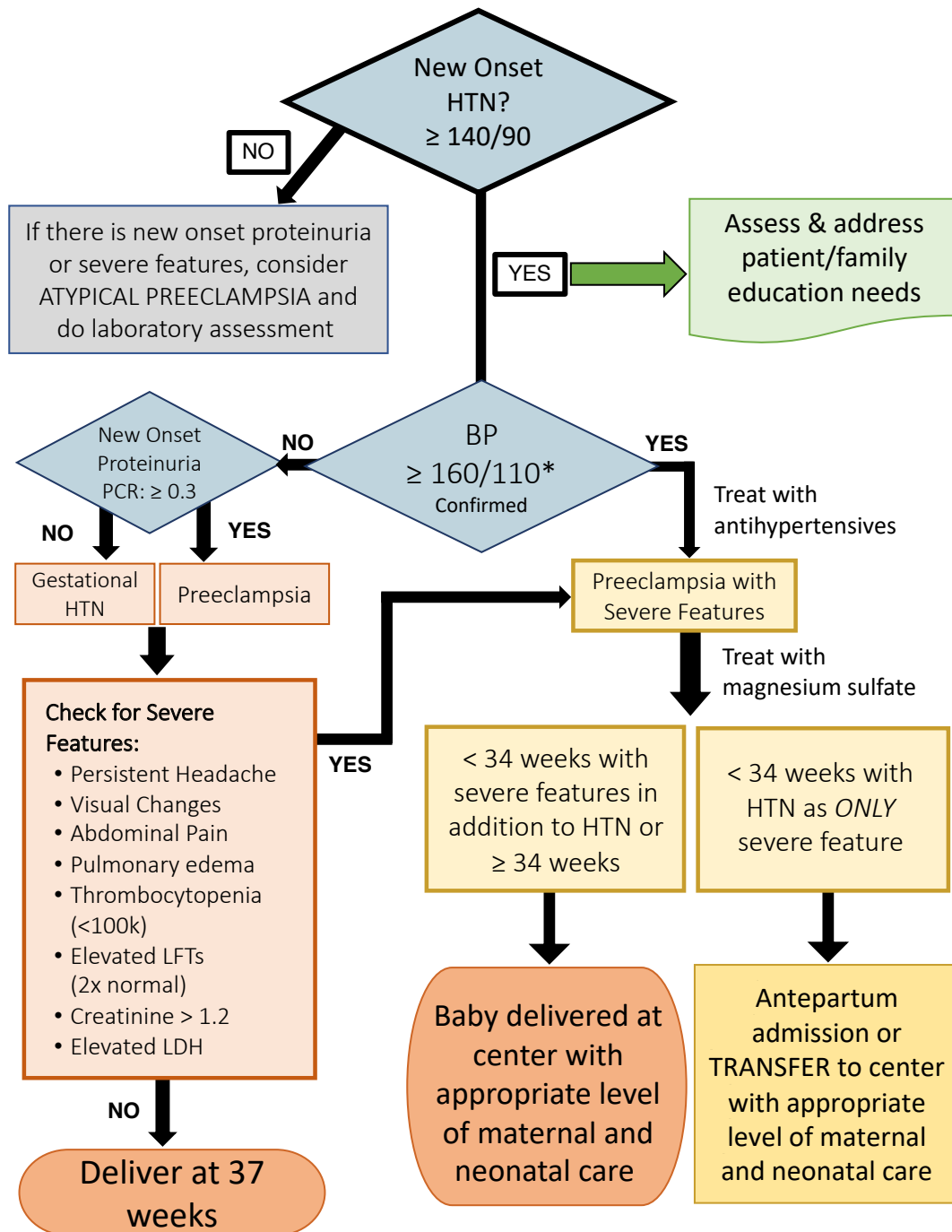


# Appendix B: Suspected Preeclampsia Algorithm



Based on ACOG Practice Bulletin 222, June 2020

**The management and decision to deliver baby applies *equally* to Preeclampsia and Gestational Hypertension**

**TREAT BP ACCORDINGLY**

**If abnormal labs or symptoms, proceed to delivery**

\*Clinicians may consider antihypertensive therapy at 155/105 mm Hg given the association with increased maternal morbidities at this threshold in several studies as discussed in Toolkit Section: Borderline Severe-Range Blood Pressures: A Clinical Conundrum on page 35.

This figure was adapted from the *Improving Health Care Response to Preeclampsia: A California Quality Improvement Toolkit*, funded by the California Department of Public Health, 2014; supported by Title V funds.